

SUMMARY

01 Acces and school map

02 Contacts

03 Useful Links

04 Useful addresses

05 Where to eat ?

06 SSVs

07 Associations

08 The integration

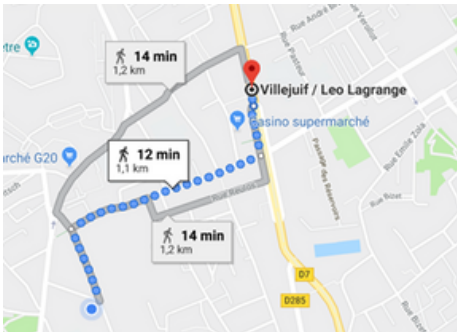
09 Activities / Sport

ACCESS



Metro station : Paul Vaillant-Couturier
(Metro 7)

Distance : 13 mn (by walking)



Metro station : Léo Lagrange (Metro 7)

Distance : 12 mn (by walking)



Bus station : Place du 8 mai 1945 (Bus
131 / V7)

Distance : 2 mn (by walking)

SCHOOL MAP

Printer : Ground Floor

Library : 1st Floor



Building VA

Educational laboratories,
IT department :
Underground Floor

Laboratory department :
on the right, next to the
underground Floor

Corporate Relations,
International Relations Offices
and Cafeteria VA : Ground Floor

Food service : Ideel Garden & Crocus

SBIP Office and
Workshop: Ground
Floor

English Department : 1st
Floor

Campus Entrance

*Please bring your
student card to open the
door

BioCampus'
permaculture garden

Student Associations,
CellTechs : 1st Floor

Building VB

Research Division
(BIRL, PBS, LRPIA)
Bioproduction 1st
Floor

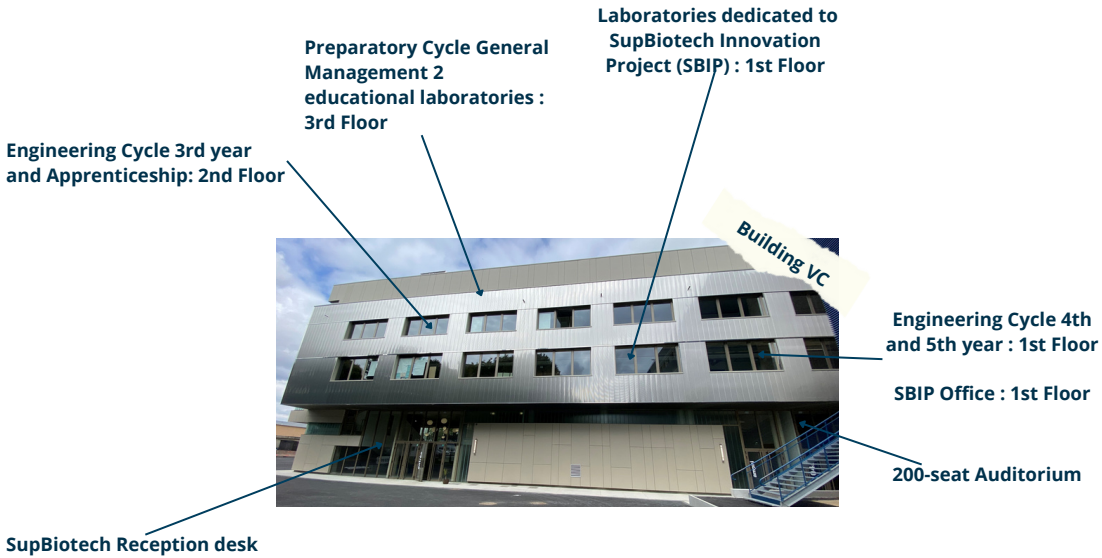
VB Cafeteria
Culinary
biotechnologies
laboratory

Admissions, Communication and
Bachelor's Office : Ground Floor



LRPIA laboratory : 1st
Floor

SCHOOL MAP



CONTACTS



VANESSA PROUX
Executive Director



MELANIE BARBOSA
Executive Assistant
melanie.barbosa@supbiotech.fr



LUDIVINE MONCEAU
Dean of Studies - Undergraduate program
ludivine.monceau@supbiotech.fr



MARIE-THÉRÈSE MOUFAREJ ABOU JAOUDE
Administrative and educational manager
marie-therese.moufarej-abou-jaoude@supbiotech.fr



MAYSSA NASSOUR
Life sciences teacher
Referent for English-speaking section
maysa.nassour@supbiotech.fr



THIERRY PICAUD
Deputy Director
Engineering Cycle Director
thierry.picaud@supbiotech.fr



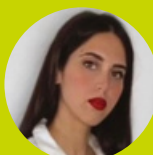
CONSTANTINA KAPETANYANIS
Dean of Studies
Director Delegate to 3rd years
constantina.kapetanyannis@supbiotech.fr



MATHILDE SAVOIE
Dean of Studies – Apprenticeship
mathilde.savoie@supbiotech.fr



JENNIFER BATTU
Coordinator of the Graduate Program
jennifer.goyat@supbiotech.fr



MARWA LAGHA
Educational and administrative assistant
marwa.lagha@supbiotech.fr



LÉA RAMFOS
Educational and administrative assistant
léa.ramfos@supbiotech.fr



ESTELLE MOGENSEN
Head of Educational laboratories
estelle.mogensen@supbiotech.fr



ROXANE LOYANT
In charge of practicals / Laboratory
Technician
roxane.loyant@supbiotech.fr



CORENTIN ROUSSEAU
Laboratory Technician CB2
Laboratory practicals
corentin.rousseau@supbiotech.fr



SOFIANE EL OURIACHI
In charge of practicals / Laboratory
Technician
sofiane.el-ouriachi@supbiotech.fr



MARIE DA CRUZ
Dean of Studies – Bachelor
marie.da-cruz@supbiotech.fr



TANIA GIDEL
International Relations Director
tania.gidel@supbiotech.fr



LARA HAJJ SLEIMAN
International Relations Officer
lara.hajj-sleiman@supbiotech.fr



VANESSA MICHEL
International relations coordinator for incoming and
outgoing mobility
vanessa.michel@supbiotech.fr



STEPHANIE RODRIGUES
International Relations Manager
stephanie.rodrigues@supbiotech.fr



SAMUEL AMSELLEM
International Relations Administrative Assistant
samuel.amsellem@supbiotech.fr



SOPHIE MOTHRE
Innovative Projects Director
sophie.mothre@supbiotech.fr



JOHANN HABERSETZER
Assistant Manager, Innovative Projects
Department
johann.habersetzer@supbiotech.fr



MARINE MERCIER
Innovative Projects Assistant
marine.mercier@supbiotech.fr



BAPTISTE FAVARD
Assistant engineer
baptiste.favard@supbiotech.fr



EMMANUEL HIVERT
Strategic Development Director
emmanuel.hivert@supbiotech.fr

JIHANE GOUMISS
Deputy Director- Admissions
jihane.goumiss@supbiotech.fr

FRÉDÉRIQUE BUIL
Corporate Relations Director
frederique.buil@supbiotech.fr

SAMANTHA JOST
Administrative assistant for internships
samantha.jost@supbiotech.fr



CÉLINE ZOUBEIDI
Communication Director
celine.zoubeidi@supbiotech.fr



KEVIN AMAVI ABALLO
In charge of communication
kevin.aballo@supbiotech.fr



CINDY BRAKO
communication assistant
cindy.brako@supbiotech.fr



PAUL-EMMANUEL GOMEZ
Community manager and associative referents
paul.emmanuel-gomez@supbiotech.fr



FRANK YATES

Laboratory Manager and Research Director
(CELLTECHS)
frank.yates@supbiotech.fr



FABIEN MILANOVIC

Laboratory Manager and Lecturer Researcher
(PBS)
fabien.milanovic@supbiotech.fr



AGNES SAINT-POL

Laboratory Manager and Lecturer
Researcher (LRPIA)
agnes.saint-pol@supbiotech.fr



JEAN-YVES TROSSET

Laboratory Manager and Lecturer
Researcher (BIRL)
jean-yves.trosset@supbiotech.fr



USEFUL LINKS



Access to lecture content and information from teachers and administration

Access to MiMos, online courses of SupBiotech

Link : <https://moodle.supbiotech.fr/login/index.php>



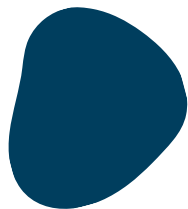
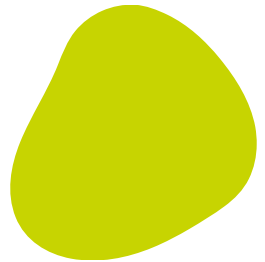
Access to timetable, personal information, transcripts, and class council decisions.

Link : <https://supbio-etud.helvetius.net/pegasus/>



Office Pack: text-processing tools and mailbox management

Link : <https://www.office.com/>



USEFUL LINKS



Access to an exclusive platform for internship offers

Link : <https://supbiotech.jobteaser.com/>

nature biotechnology

Access to all magazines

Link : <https://www.nature.com/nbt/>



Access to online educational magazines

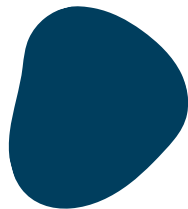
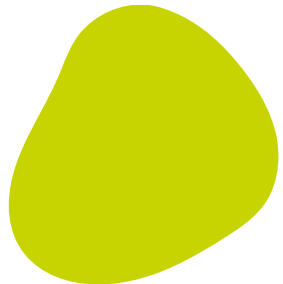
Link : <https://www.scholarvox.com/>



CYBERLIBRIS

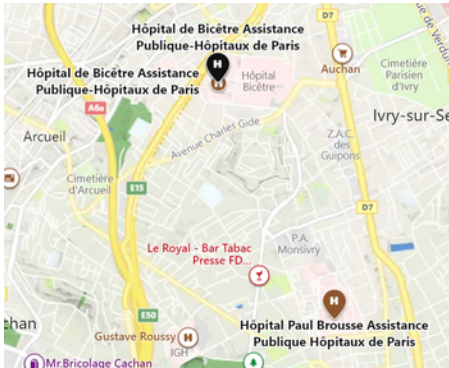
Access to online books

Link : <https://www.cyberlibris.com/>



USEFUL ADDRESSES

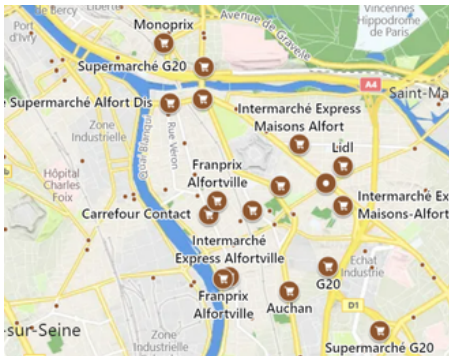
Hospitals nearby



Hôpital Bicêtre
78 Rue du Général Leclerc
94270 Le Kremlin-Bicêtre

Hôpital Paul Brousse
12 avenue Paul Vaillant Couturier
94800 Villejuif

Supermarkets



Coccinelle express : 5 mn by walking
G20 : 6 mn by walking
Casino : 11 mn by walking
Franprix : 12 mn by walking
Okabé Mall : Metro station Kremlin– Bicêtre (16 mn in transit)

Drugstores



Pharmacie Audrain-Rochard : 4 mn by walking
Pharmacie de la pépinière : 7 mn by walking
Pharmacie des écoles : 11 mn by walking
Pharmacie des arcades : 12 mn by walking
Pharmacie du soleil : 13 mn by walking

WHERE TO EAT?

Ideel Garden : vending machine in Cafeteria VA offering healthy homemade dishes every day



Crocus : a school snack shop offering burgers, paninis, sandwiches, and a variety of dishes every day

Boulangerie La Craquante : 2 minutes away from school: sandwiches, paninis, salads

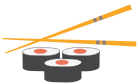
New Mac Chic : 2 minutes away from school: paninis, pizzas, burgers, dishes...

Tips : a pizza purchased = a free pizza to take away



Pizza Hut : 10 minutes away from school: pizzas (delivery)

Ikiiki sushi : 10 minutes away from school: sushis, noodles, chirashis... (delivery)



Sushi Kyo : 5 minutes away from school: sushis, noodles, chirashis... (delivery)

Maihak : Indian restaurant (delivery)



Picard : frozen prepared meals (10 min from school)

Franprix : sandwiches, pastabox, prepared meals...

SSVs (Sexist and Sexual Violences)

SupBiotech is committed to zero tolerance of gender-based and sexual violence, discriminations, and hazing.

Any victim or witness can file a report on the platform <https://supbiotech.signalement.net>.

On this platform, you can tell your story, confide, be supported and listened to. This platform is supervised by Cécile Vermot, Equality Advisor for the Villejuif campus, and Pierre Leviaux, Equality Advisor for the Lyon campus, in coordination with the School Director, Vanessa Proux. All reports remain confidential. Witnesses and victims may remain anonymous if they wish.

These measures are aimed at fighting sexist, sexual and homophobic violence, as well as discriminations. All actions listed below are considered offences punishable by the penal code. At SupBiotech, such violence may give rise to disciplinary action, independently of criminal prosecution. Following a report, an investigation may be launched to set up a disciplinary board to deal with the person concerned. This disciplinary board can result in sanctions ranging from a simple call to order to permanent exclusion from the school.

Reminder:

- Sexist and/or sexual violence are acts (rape, violence, assault, and harassment) perpetrated by one or more people against another person, because of their gender. They may be physical, verbal, emotional, psychosocial, or sexual.
- Homophobic violence (which includes lesbophobic, biphobic and transphobic violence) are acts (rape, violence, aggression, and harassment) perpetrated by one or more people against another person, because of their sexual orientation. They may be physical, verbal, emotional, psychosocial, or sexual.
- Discriminations are unequal and unfavorable treatments applied to certain people because of their skin color, nationality, gender, religious belief, disability, name or physical appearance.

Contacts :

Signaling platform: <https://supbiotech.signalement.net>

Villejuif Equality Advisor: cecile.vermot@supbiotech.fr

Lyon Equality Advisor: pierre.leviaux@supbiotech.fr

STUDENT ASSOCIATIONS



Au'R Kestra : Music Association



BDA : SupBiotech Arts Bureau



BD2S : SupBiotech Sports Association



Beer Lambiert : SupBiotech Fermentation Association



BioCampus : SupBiotech and Epita ecological association



Cosmé'Tech : SupBiotech cosmetics association



EPHEMERE
COLLECTIF PHOTO

Ephemere : Photography association



iGEM IONIS : Association participating in the world contest for synthetic biology



International DNA : Association for international students



Innov'eat : Association for the development of innovative food products



SBConsult : Association SupBiotech junior company

STUDENT ASSOCIATIONS



Sup'Bio Dance : : SupBiotech Dance Association



Sup'IAHM : SupBiotech charity association



SupBiotech Journalism Association :
SupBiotech Journal Publishing Association



Tech My Wine : SupBiotech Oenology Association



Stop VSS : Association fighting against sexist and sexual violence



Sup'Board Games : Board Games association



Symbioz : LGBTQIA+ association



Vulgaris : Association for the popularization of science and the dissemination of critical thinking



Sup'Bio Alumni : SupBiotech Alumni Association

STUDENT ASSOCIATIONS



Féeromone
Student Bureau 2022-2023



Rodéosine
Student Bureau 2023-2024

If you have any questions, please do not hesitate to contact the associations by e-mail

- aurkestra@supbiotech.fr
- stop-vss@supbiotech.fr
- bda@supbiotech.fr
- bd2s@supbiotech.fr
- beer.lambiert@supbiotech.fr
- biocampus@supbiotech.fr
- bde@supbiotech.fr
- cosmetech@supbiotech.fr
- ephemere@epita.fr
- igem-ionis2023@supbiotech.fr
- internationaldna@supbiotech.fr

- innoveat@supbiotech.fr
- supbioalumni@supbiotech.fr
- symbioz@supbiotech.fr
- supbiodance@gmail.com
- contact@subconsult.fr
- supiahm@supbiotech.fr
- sja@supbiotech.fr
- sup-board-games@supbiotech.fr
- techmywine@supbiotech.fr
- vulgaris@supbiotech.fr

THE INTEGRATION



WEDNESDAY,
SEPTEMBER 6TH

9:30AM – 1PM Meeting for the start of the academic year Biotech 1 / Bachelor 1 / Biotech 3 / Biotech 3 FISA
1PM – 5PM Picnic & activities at Parc des Hautes Bruyères
6PM – 10PM Back-to-school afterwork by BDE Féeromone



TUESDAY,
SEPTEMBER 12TH

1:30PM – 2PM Appointment of Bachelor 1 sponsors



WEDNESDAY,
SEPTEMBER 13TH

1:30PM – 2PM Appointment of Biotech 1 sponsors



SEPTEMBER 15TH
TO 17TH

Integration Weekend

ACTIVITIES / SPORT



Forest Hill Villejuif

18-20 Rue Auguste Perret, 94800 Villejuif

Aquaboulevard

4-6 Rue Louis Armand, 75015 Paris (Metro 8)

Accessible with your Forest Hill card.

Antrebloc

5 Rue Henri Barbusse, 94800 Villejuif

Climbing walls and plenty of other activities to get your adrenalin pumping!



Stade Nautique Yuri Gagarine

67 Rue Yuri Gagarine, 94800 Villejuif

Villejuif swimming pool with outdoor Olympic pool, 25 m indoor pool, diving pit and indoor beginners' pool.



Welcome !



@supbiotech

